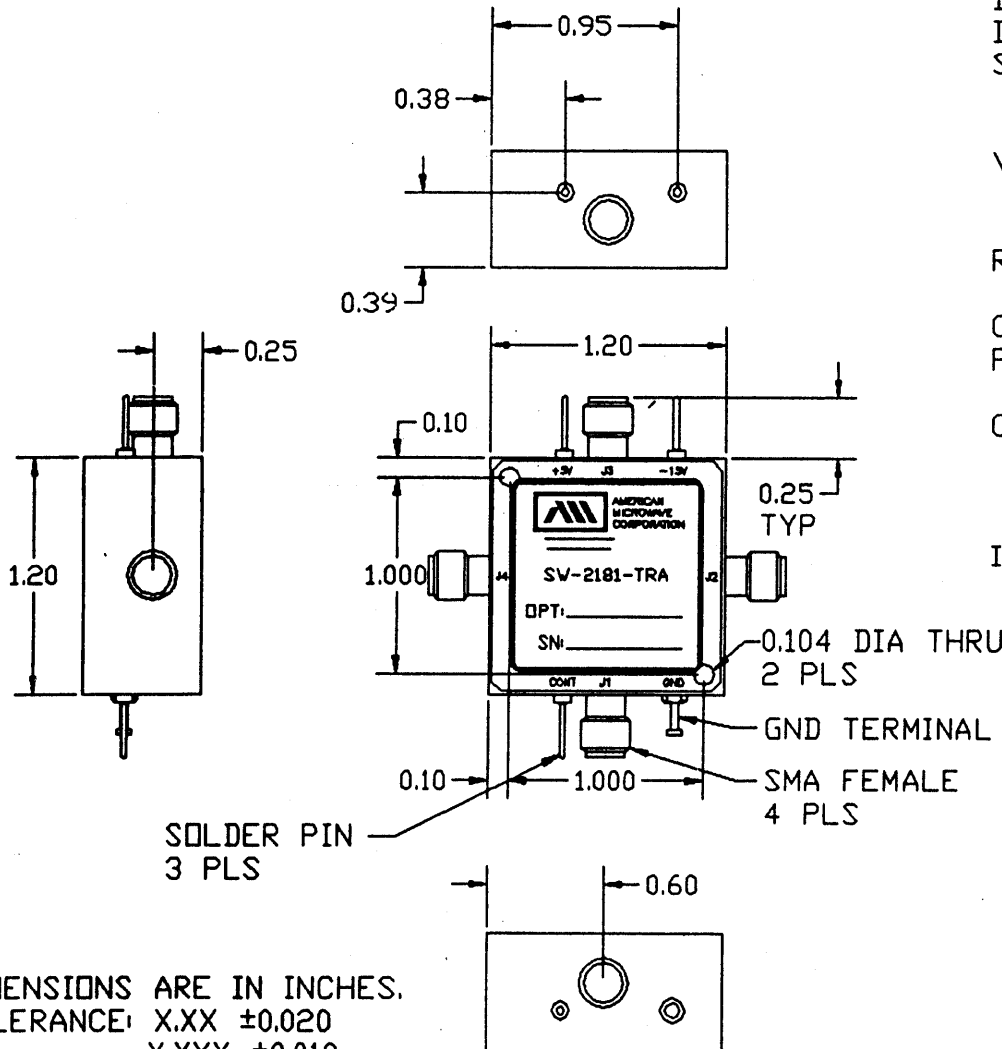


TABLE I			
RTL LOGIC STATE	CONDITIONS AT LOGIC INPUT	LOW LOSS PATHS	ISOLATED PATHS
0	0-0.8V 1.6mA MAX SINK	J1 - J2 J3 - J4	J1 - J4 J3 - J2

REVISIONS				
ZONE	REV.	DESCRIPTION	DATE	APPROVED
	A	ORIGINAL RELEASE	09/20/92	

SWITCH SPECIFICATIONS:

CONFIGURATION: TRANSFER SWITCH
 FREQ. BAND: 0.3 - 18GHz
 INSERTION LOSS: 3.3dB MAX @ 18GHz
 ISOLATION: 40dB MIN @ 18GHz
 SWITCHING SPEED:
 10% RF TO 90% RF: 100nS
 90% RF TO 10% RF: 100nS
 VSWR:
 INPUT: 1.9:1
 OUTPUT(ON): 1.9:1
 RF POWER:
 CW: 0.5W MAX
 CONTROL: SINGLE CONTROL
 POWER SUPPLY:
 +5VDC @ 85mA
 -15VDC @ 100mA
 CONNECTORS:
 RF: SMA
 POWER: SOLDER PIN
 CONTROL: SOLDER PIN
 INTERCEPT POINT:
 3rd ORDER: +45dBm @ -10dBm INPUT POWER



DIMENSIONS ARE IN INCHES.
 TOLERANCE: X.XX ±0.020
 X.XXX ±0.010

CONTRACT NO.		AMERICAN MICROWAVE CORPORATION FREDERICK, MARYLAND		
APPROVALS	DATE	TITLE OUTLINE DRAWING SW-2181-TRA TRANSFER SWITCH 0.3-18GHz		
DRAWN R.AFABLE	09/20/92	SIZE A	FSCM NO. 60483	DWG NO. SK-215
CHECKED		REV. A		
ISSUED		SCALE 1:1	SHEET 1 of 1	